



Tapered Screw-Vent® Implant System



The implant of choice brings flexibility to your practice.



zimmer | dental

TAPERED SCREW-VENT IMPLANT CELEBRATES 10 YEARS OF QUALITY

1 LEVERAGING PLATFORM PLUS™ TECHNOLOGY

ZIMMER'S PROPRIETARY *PLATFORM PLUS* TECHNOLOGY CREATES FAVORABLE CONDITIONS FOR BONE-LEVEL MAINTENANCE,¹⁻³ WHILE THE INTERNAL HEX, FRICTION-FIT CONNECTION SHIELDS BOTH THE ABUTMENT SCREW AND CRESTAL BONE FROM CONCENTRATED OCCLUSAL FORCES.^{1,2} THE LEAD-IN BEVEL REDUCES HORIZONTAL STRESSES BETTER THAN FLAT "BUTT-JOINT" CONNECTIONS,¹⁻³ AND THE 1.5MM DEEP INTERNAL HEX DISTRIBUTES BITE FORCE DEEP INTO THE IMPLANT.¹⁻³

1.5mm deep internal hex shields the retention screw from excess loading¹

*One-degree taper forms a friction-fit connection with the implant to **virtually eliminate micromovement¹***

Lead-in bevel designed to reduce horizontal stresses on crestal bone¹⁻²

Abutment

Implant

The Virtual Cold Weld

2 PROMOTING PRIMARY STABILITY

PATIENTS EXPECT TO LEAVE IMPLANT SURGERY WITH A TOOTH IN PLACE, HOLDING ESTHETICS AND CONVENIENCE AS THEIR TOP PRIORITY. MEETING SUCH DEMANDS REQUIRES AN IMPLANT DESIGNED TO ACHIEVE PRIMARY STABILITY.

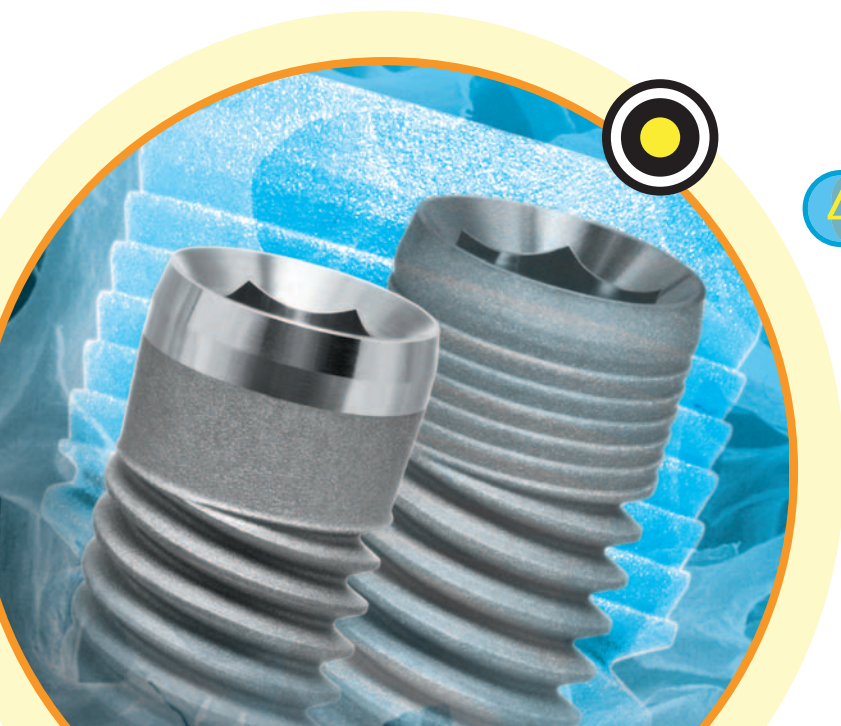
- Primary stability enables immediate placement and/or immediate loading of *Tapered Screw-Vent* in appropriately selected patients⁴⁻⁸
- Soft bone surgical protocol allows for bone compression to provide additional stability in poor quality sites⁶
- In dense bone, the stepped finishing drill enables apical bone engagement for initial stability⁶

3 DESIGNED FOR FLEXIBILITY

ZIMMER'S CRESTAL CONFIGURATIONS ARE DESIGNED TO CREATE FAVORABLE CONDITIONS FOR MARGINAL BONE-LEVEL MAINTENANCE.⁹

Available Configurations:

- Machined collar with *MTX*[®] textured titanium surface without microgrooves
- Machined collar with *MP-1*[®] HA coated surface without microgrooves
- *MTX* collar with *MTX* textured titanium surface with microgrooves



4 TRUE SIMPLICITY

ALL *TAPERED SCREW-VENT* IMPLANTS ARE COMPATIBLE WITH THE *ZIMMER*[®] INSTRUMENT KIT SYSTEM AND PROSTHETICS YOU KNOW AND TRUST.

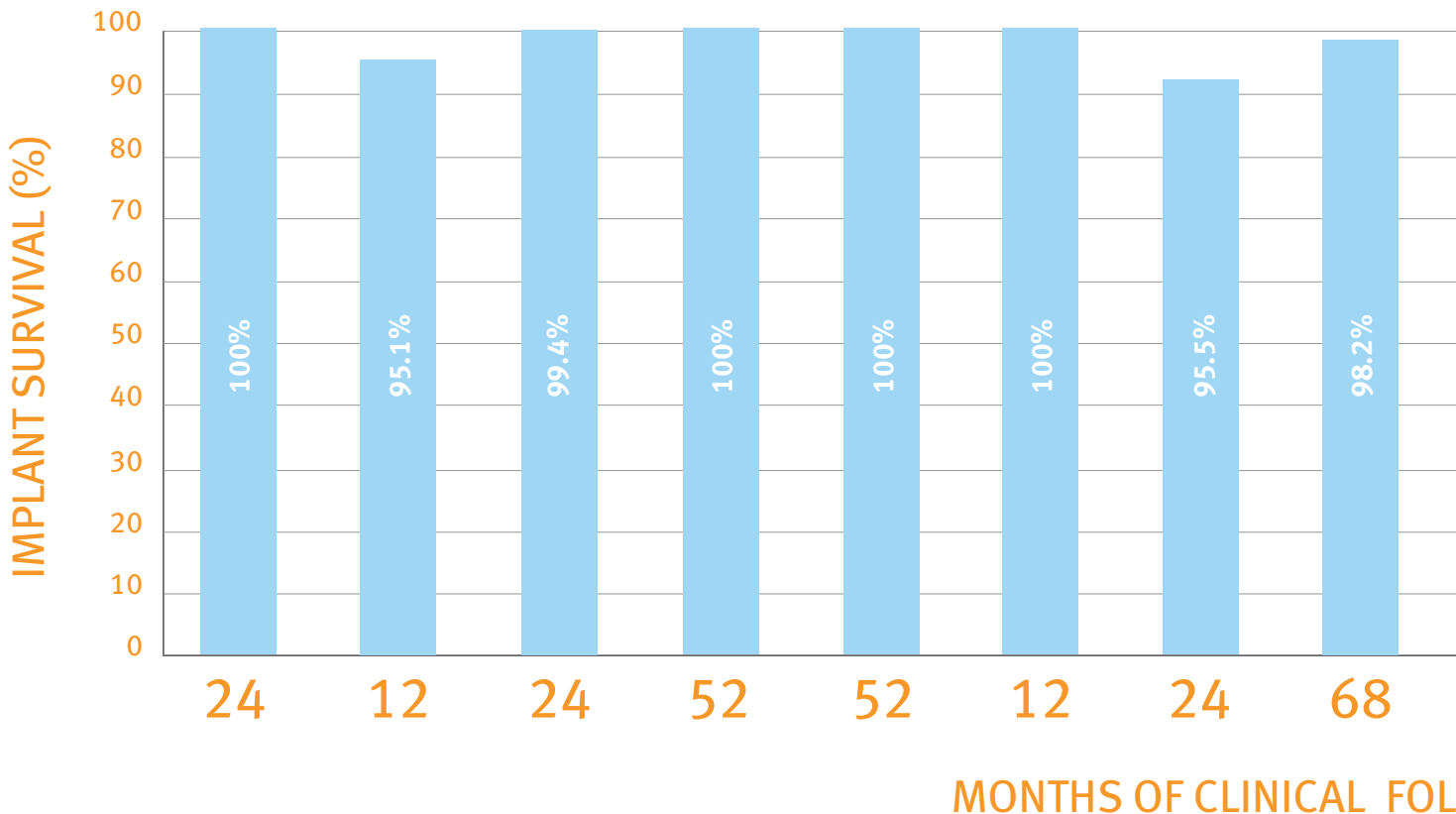
CLINICAL RESULTS

5

CELEBRATING THE CLINICAL OUTCOMES OF THE TAPERED SCREW-VENT

DOCUMENTED PROSPECTIVE CLINICAL SURVIVAL RATES FOR 1,553 TAPERED SCREW-VENT IMPLANTS RANGE FROM 95.1% TO 100% (MEAN = 98.7%) WITH FOLLOW-UP TIMES RANGING FROM 3 TO 120 MONTHS (MEAN = 36.4 MONTHS).

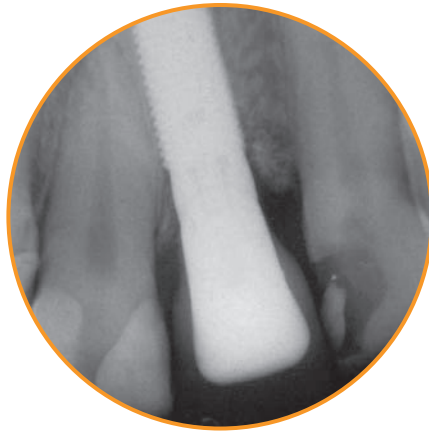
Individual results may vary according to patient selection and clinical experience. Numerous other short-term (<5 years) studies have further documented the quality and performance of *Tapered Screw-Vent* Implants under immediate and delayed placement, as well as immediate and delayed loading.¹⁰



NT IMPLANT



Final restoration

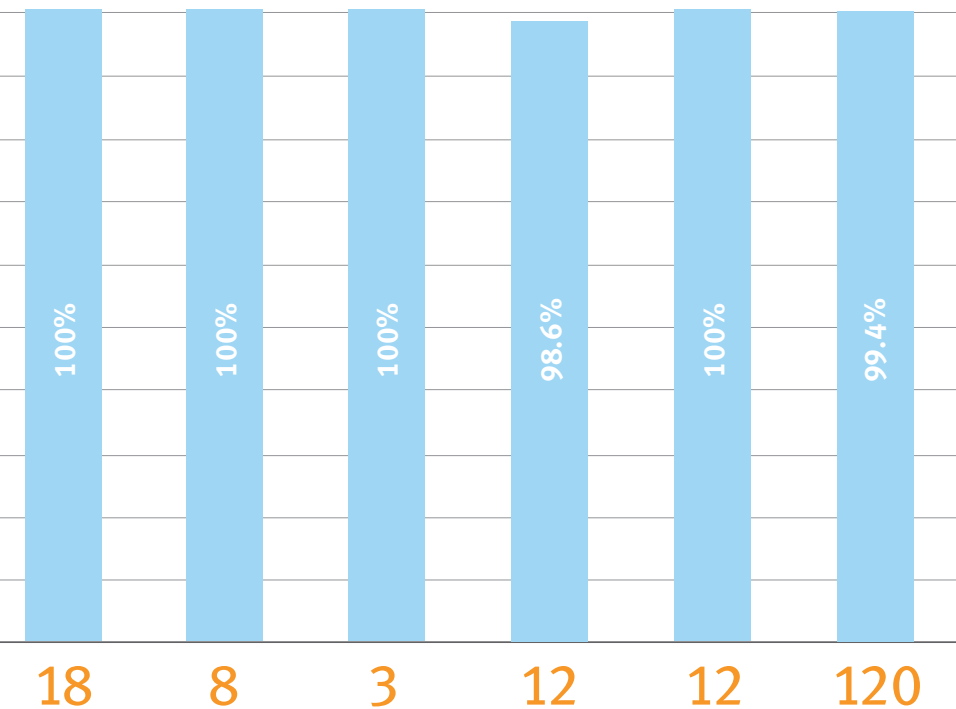


X-ray at time of final restoration



10-year follow-up showed no bone loss

Clinical photos ©2010 Zeev Ormianer, DMD. All rights reserved. Individual results may vary.



LOW-UP

(STUDY REFERENCES ARE AS FOLLOWS: 11,12,8,13-16,7,17,18,5,4,19,20)



- ¹ Binon PP. The evolution and evaluation of two interference-fit implant interfaces. *Postgraduate Dent.* 1996;3:3-13.
- ² Mihalko WM, May TC, Kay JF, Krause WP. Finite element analysis of interface geometry effects on the crestal bone surrounding a dental implant. *Implant Dent.* 1992;1:212-217.
- ³ Chun HJ, Shin HS, Han CH, Lee SH. Influence of implant abutment type on stress distribution in bone under various loading conditions using finite element analysis. *Int J Oral Maxillofac Implants.* 2006;21:105-202.
- ⁴ Siddiqui AA, O'Neal R, Nummikoski P, Pituch D, Ochs M, Huber H, Chung W, Phillips K, Wang IC. Immediate loading of single-tooth restorations: one-year prospective results. *J Oral Implantol.* 2008;34:208-218.
- ⁵ Shiigai T. Pilot study in the identification of stability values for determining immediate and early loading of implants. *J Oral Implantol.* 2007;33:13-22.
- ⁶ Rosenlicht JL. Advancements in soft bone implant stability. *West Indian Dent J.* 2002;6:2-7.
- ⁷ Ormianer Z, Palti A. Long-term clinical evaluation of tapered multi-threaded implants: results and influences of potential risk factors. *J Oral Implantol.* 2006;32:300-307.
- ⁸ Khayat PG, Milliez SN. Prospective clinical evaluation of 835 multithreaded Tapered Screw-Vent implants: results after two years of functional loading. *J Oral Implantol.* 2007;34:225-231.
- ⁹ Shin SY, Han DH. Influence of a microgrooved collar design on soft and hard tissue healing of immediate implantation in fresh extraction sites in dogs. *Clin Oral Implants Res.* 2010;21:804-814.
- ¹⁰ Data on file with Zimmer Dental Inc.
- ¹¹ Artzi Z, Parsori A, Nemcovsky CE. Wide-diameter implant placement and internal sinus membrane elevation in the immediate postextraction phase: clinical and radiographic observations in 12 consecutive molar sites. *Int J Oral Maxillofac Implants.* 2003;18:242-249.
- ¹² Cannizzaro G, Felice P, Leone M, Viola P, Esposito M. Early loading of implants in the atrophic posterior maxilla: lateral sinus lift with autogenous bone and Bio-Oss versus crestal mini sinus lift and 8-mm hydroxyapatite-coated implants. A randomised controlled clinical trial. *Eur J Oral Implantol.* 2009;2:25-38.
- ¹³ Lee CYS, Rohrer MD, Prasad HS. Immediate loading of the grafted maxillary sinus using platelet rich plasma and autogenous bone: a preliminary study with histologic and histomorphometric analysis. *Implant Dent.* 2008;17:59-73.
- ¹⁴ Lee CYS, Hasegawa H. Immediate load and esthetic zone considerations to replace maxillary incisor teeth using a new zirconia implant abutment in the bone grafted anterior maxilla. *J Oral Implantol.* 2008;34:259-267.
- ¹⁵ Lee CYS. Immediate load protocol for anterior maxilla with cortical bone from mandibular ramus. *Implant Dent.* 2006;15:153-159.
- ¹⁶ Ormianer Z, Garg AK, Palti A. Immediate loading of implant overdentures using modified loading protocol. *Implant Dent.* 2006;15:35-40.
- ¹⁷ Ormianer Z, Schiroli G. Maxillary single-tooth replacement utilizing a novel ceramic restorative system: results to 30 months. *J Oral Implantol.* 2006;32:190-199.
- ¹⁸ Park SH, Lee KW, Oh TJ, Misch CE, Shotwell J, Wang HL. Effect of absorbable membranes on sandwich bone augmentation. *Clin Oral Implants Res.* 2008;19:32-41.
- ¹⁹ Steigmann M, Wang HL. Esthetic buccal flap for correction of buccal fenestration defects during flapless immediate implant surgery. *J Periodontol.* 2006;77:517-522.
- ²⁰ Data on file with Zimmer Dental Inc.

For more information about our Products, Regenerative Materials and Educational Opportunities, contact us:

1900 Aston Avenue
 Carlsbad, CA 92008-7308
 USA

In the U.S. 1 (800) 854-7019
To fax an order 1 (888) 225-2483
Outside the U.S. +1 (760) 929-4300
Australia +61 (0)2 9950 5444 or 1 (800) 241 916
Canada +1 (905) 567-2073 or 1 (800) 265-0968
China + 86 21 22115147

France +33 (0)1 45 12 35 35
Germany +49 (0)761 1 56 47 0
Israel +972 (0)3 6124242
Italy +39 043 855 5573
Spain +34 93 846 05 43

To receive our eNews visit us at http://www.zimmerdental.com/news_eNewsletterSignUp.aspx

