

Single-Unit Cement-Retained Restorations



1. Remove Healing Collars from implants using the 1.25mmD (0.050") Hex Tool.



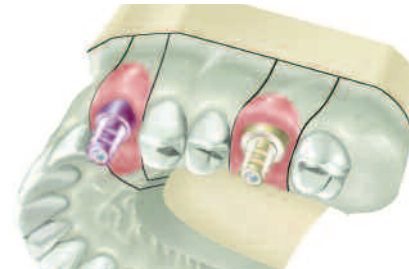
2. For the indirect impression technique, screw Indirect Transfers onto implants with the 1.25mmD Hex Tool.



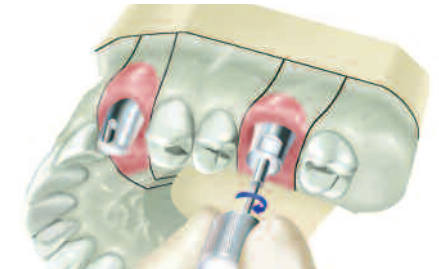
3. Use light to medium body material around transfer and record a full-arch impression with standard body material. Remove transfers from implants after impression has been taken. Replace Healing Collars.



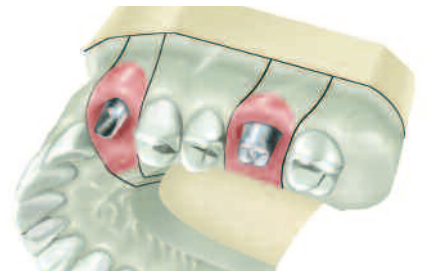
4. Attach Implant Analog to transfer with the 1.25mmD Hex Tool and insert into impression. Send impression to laboratory.



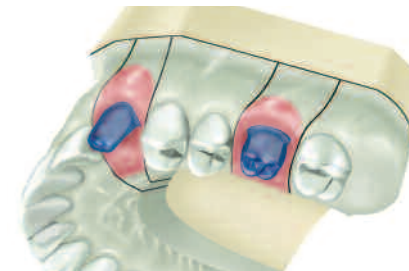
5. Pour model in die stone using soft tissue material to represent gingival contours if desired. Remove transfers from stone model.



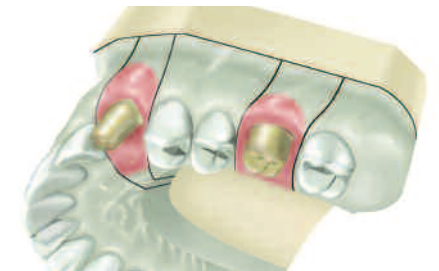
6. Select appropriate abutments. Screw the 20° Angled Abutment and the *Hex-Lock*™ Abutment to the appropriate Implant Analogs using the 1.25mmD Hex Tool.



7. Modify the 20° Angled Abutment and *Hex-Lock* Abutment as needed.



8. Wax and cast the copings using traditional prosthodontic techniques.



9. Apply porcelain to casting to complete restoration.



10. Screw 20° Angled Abutment and *Hex-Lock* Abutment onto implants with the 1.25mmD Hex Tool. Apply 30 Ncm of torque with a calibrated prosthetic torque wrench. Verify with x-rays that abutments are fully seated.



11. Cement final prosthesis. If desired, provisional cement can be used.



12. Completed restorations are in place.

Note: This guide is for educational use only.

Refer to the Zimmer Dental Prosthetics Instructions for Use (part #4894), and *Tapered Screw-Vent*® and *AdVent*® Implant Restorative Manual (part #4941) for complete instructions for use.

