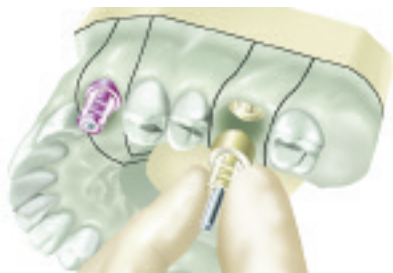
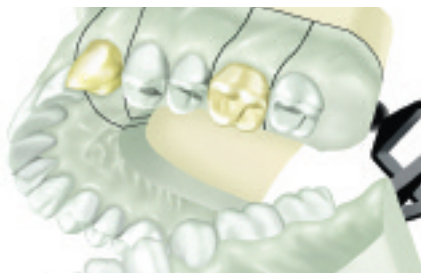


Hex-Lock™ Plastic Temporary Abutment Restorative Guide



1. Pour working cast in dental stone. Use soft tissue material to represent gingival contours if desired. Remove transfers from the cast.



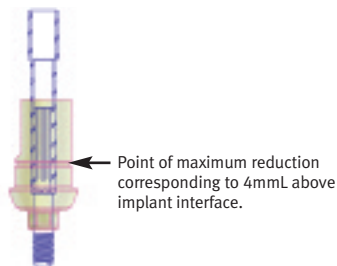
2. Pour the opposing arch impression in dental stone, then utilize the interocclusal records to articulate the casts. Create a diagnostic wax-up of the teeth to be replaced. Duplicate the cast and fabricate a clear acrylic (vacuform) shell.



3. Remove the diagnostic wax pattern and steam clean the working cast. Trim and re-seat the clear vacuform. Drill a small hole in the vacuform to allow the abutment screw of the proposed screw-retained provisional crown to protrude through.



4. Attach the corresponding Plastic Temporary Abutments to the Implant Analogs. Use a 1.25mmD Hex Tool to tighten the abutment screw, using finger-pressure only.



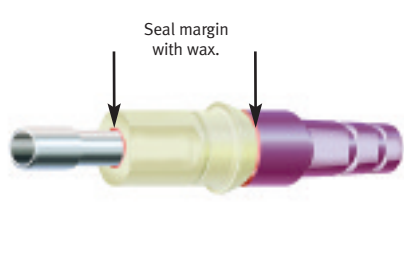
5. Mark the required modifications on the abutment to allow for appropriate occlusal clearance, gingival contouring and prosthesis design for adequate thickness of veneering material.



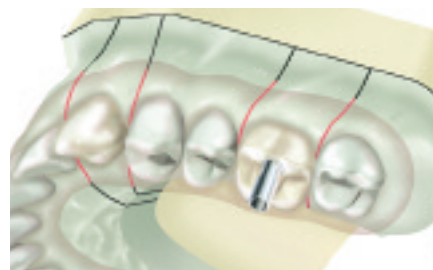
6. Trim the Plastic Temporary Abutments. Note: Cement-retained restorations (canine) require additional preparation as a separate crown will be cemented onto the abutment.



7. Block out undercuts and apply separating medium to the cast. Cover the abutment for the cemented provisional with wax to prevent adherence of temporary material.



8. To avoid ingress of excess processing liquid (monomer) in the indicated areas, seal the void around the screw as it enters the screw access channel. Seal the junction of the abutment to the analog in a similar fashion. Do not apply monomer directly to the abutment.



9. Selectively fill the vacuform with temporary material and place over the trimmed abutments, allowing the screw to pass through the vacuform. Follow manufacturer's guidelines to cure temporary material.



10. Follow standard laboratory procedures to complete both the cement- and screw-retained provisional prostheses. Trim the abutment screws accordingly.



11. a) Canine: Tighten abutment screw, block out screw access hole and cement provisional.
b) Molar: Attach the one-piece abutment/provisional to implant, tighten abutment screw and block out screw access hole.



12. Completed provisional restorations are in place.

Note: This guide is for educational use only.

Refer to Zimmer Dental Prosthetics Instructions for Use (part #4894) for complete instructions for use.

